

COUPLING CATALOGUE

Push-in and Composite Building Block



WABCO

COUPLING CATALOGUE: PUSH-IN AND COMPOSITE BUILDING BLOCK

Part number overview

Edition 1

This publication is not subject to change procedures.
New versions can be found under the following link
Inform.wabco-auto.com

@ WABCO 2014

WABCO

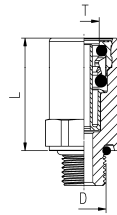
All rights reserved.
Version 01 / 08.2013(en)

New Line Push-in
Coupling

New Line Gerade Steck-
verbindungen

New Line Union Mãe

New Line Raccordo ad
innesto rapido



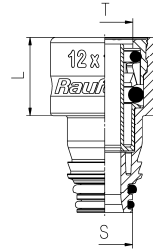
T	D	L	Composite	Conventional
6x1,0	M10x1,0	25	893 800 801 2	893 803 035 0
6x1,0	M12x1,5	24	893 800 802 2	893 803 022 0
6x1,0	M14x1,5	16	893 800 803 2	893 803 980 0
6x1,0	M16x1,5	12	893 800 082 2	893 803 023 0
6x1,0	M22x1,5	12	893 800 804 2	893 803 024 0
8x1,0	M10x1,0	27	893 800 805 2	893 803 025 0
8x1,0	M12x1,5	26	893 800 007 2	893 803 950 0
8x1,0	M14x1,5	25	893 800 806 2	893 803 026 0
8x1,0	M16x1,5	17	893 800 001 2	893 803 960 0
8x1,0	M22x1,5	13	893 800 005 2	893 803 970 0
10x1,0	M12x1,5	28	893 800 807 2	893 803 982 0
10x1,0	M14x1,5	28	893 800 816 2	893 803 892 0
10x1,0	M16x1,5	28	893 800 009 2	893 803 880 0
10x1,0	M22x1,5	17	893 800 808 2	893 803 890 0
10x1,25	M12x1,5	28	893 800 809 2	893 803 042 0
10x1,25	M16x1,5	28	893 800 812 2	893 803 044 0
10x1,25	M22x1,5	17	893 800 821 2	893 803 211 0
10X1,5	M12x1,5	28	893 800 817 2	893 803 027 0
10X1,5	M16x1,5	28	893 800 818 2	893 803 028 0
10X1,5	M22x1,5	17	893 800 819 2	893 803 029 0
12x1,5	M12x1,5	31	893 800 813 2	893 803 005 0
12x1,5	M16x1,5	30	893 800 002 2	893 803 006 0
12x1,5	M22x1,5	19	893 800 008 2	893 803 007 0
15x1,5	M16x1,5	33	893 800 820 2	893 803 930 0
15x1,5	M22x1,5	31	893 800 004 2	893 803 971 0
16x2,0	M16x1,5	33	893 800 814 2	893 803 011 0
16x2,0	M22x1,5	31	893 800 003 2	893 803 012 0

Threadless Push-in
Coupling

Threadless Gewindeloses
Steckverbindung

Threadless Raccord pour
tube à clipser

Threadless Raccordo ad
innesto rapido senza filetto



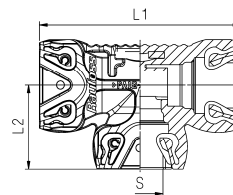
Port Size	T	L	Composite	Conventional
Small	6x1,0	4	893 800 094 2	893 803 022 0
Regular	6x1,0	4	893 800 095 2	893 803 023 0
Small	8x1,0	10	893 800 096 2	893 803 950 0
Regular	8x1,0	8	893 800 091 2	893 803 960 0
Regular	10x1,0	11	893 800 092 2	893 803 880 0
Regular	10x1,25	11	893 800 100 2	N/A
Regular	10x1,5	11	893 800 101 2	N/A
Regular	12x1,5	18	893 800 093 2	893 803 006 0
Heavy Duty	12x1,5	18	893 800 097 2	893 803 006 0
Heavy Duty	15x1,5	21	893 800 098 2	893 803 930 0
Heavy Duty	16x2,0	21	893 800 099 2	893 803 011 0

Union T&L

T&L – Stück

Té T&L

Raccordo a T&L



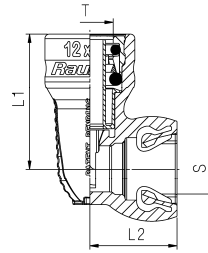
Port Size (3x)	L1	L2	Composite	Conventional
Small	53	22	893 503 071 4	893 501 193 4
Regular	62	26	893 503 072 4	893 501 194 4
Heavy Duty	73	31	893 503 073 4	N/A

Integral Push-in

90° Push-in Steckverbinder

Coude intégré ABC à clipser

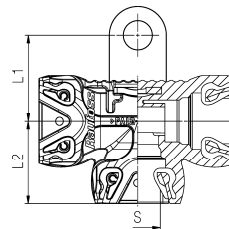
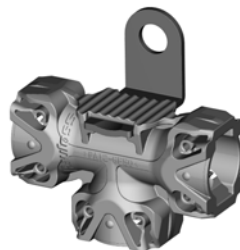
Raccordo ABC 90° integrato



Port Size	T	L1	L2	Composite	Conventional
Small	6x1,0	32	18	893 920 321 2	893 803 981 0
Regular	6x1,0	31	21	893 920 322 2	893 803 981 0
Small	8x1,0	34	18	893 920 323 2	893 831 177 0
Regular	8x1,0	33	21	893 920 324 2	893 831 177 0
Regular	10x1,0	35	24	893 920 325 2	893 831 178 0
Regular	10x1,25	35	24	893 920 379 2	893 831 501 0
Regular	10x1,5	35	24	893 920 380 2	893 401 002 0
Regular	12x1,5	37	24	893 920 326 2	893 831 182 0
Heavy Duty	15x1,5	46	24	893 920 327 2	893 831 181 0
Heavy Duty	16x2,0	46	24	893 920 328 2	893 831 183 0

Union T&L w/ Bracket clip
90°

T-Stück mit Lasche

Té ABC à clipser avec
fixationRaccordo a T&L
con staffa

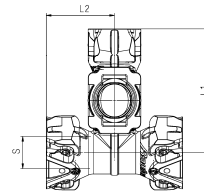
Port Size (3x)	L1	L2	Composite	Conventional
Regular	27	26	893 503 070 4	893 501 004 4

4 - Way Block

4 - Wege Block

Croix renversée

Raccordo a 4 vie



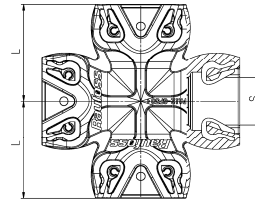
Port Size (4x)	L1	L2	Composite	Conventional
Regular	50	61	893 905 801 4	893 920 000 4
Heavy Duty	59	33	893 905 802 4	N/A

4 - Way Cross

Kreuzstück

Croix

Raccordo a croce



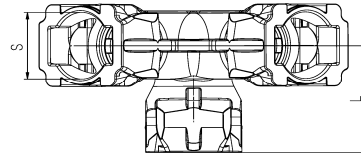
Port Size (4x)	L	Composite	Conventional
Regular	29	893 550 012 4	893 550 001 4
Heavy Duty	34	893 550 013 4	N/A

3 - Way Block

3 - Wege Block

Té abc à clipser

Raccordo a 3 vie



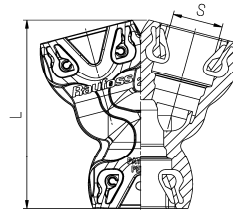
Port Size (3x)	L	Composite	Conventional
Small	24	893 550 016 4	N/A
Regular	28	893 550 017 4	893 401 294 4
Heavy Duty	33	893 550 018 4	N/A

Union Y

Y - Stück

Union Y

Raccordo a Y



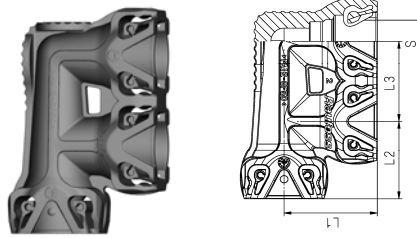
Port Size (3x)	L	Composite	Conventional
Small	47	893 400 866 4	N/A
Regular	55	893 400 867 4	N/A

Union F

F - Stück

Coude F

Raccordo a F



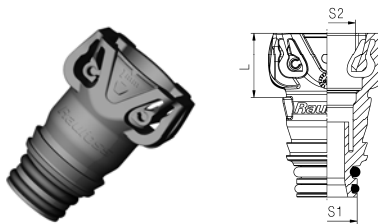
Port Size (3x)	L1	L2	L3	Composite	Conventional
Small	27	22	23	893 997 794 4	N/A
Regular	31	26	27	893 997 795 4	893 401 818 4
Heavy Duty	36	31	32	893 997 796 4	N/A

Reducer

Reduzierstück

Réducteur

Riduzione



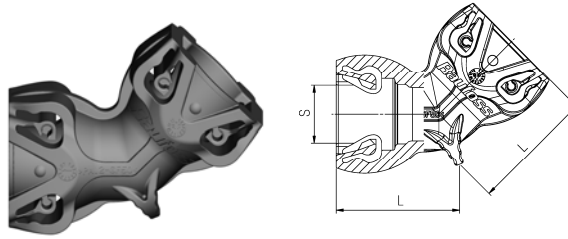
Port Size1	Port Size 2	L1	Composite	Conventional
Heavy Duty	Regular	15	893 920 241 4	N/A

45° Elbow

45° Winkel

Coude 45°

Gomito 45°



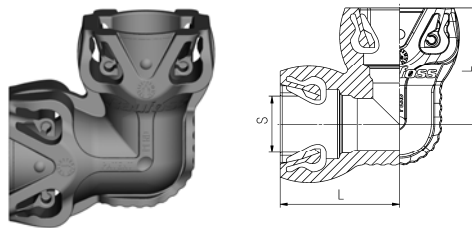
Port Size (2x)	L	Composite	Conventional
Small	22	893 400 861 4	N/A
Regular	25	893 400 862 4	893 401 797 4
Heavy Duty	30	893 400 863 4	N/A

90° Elbow

90° Winkel

Coude 90°

Gomito 90°



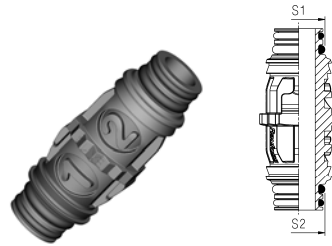
Port Size (2x)	L	Composite	Conventional
Regular	29	893 400 864 4	893 401 827 2
Heavy Duty	34	893 400 865 4	N/A

Union Male

Gewindeloser Verbinder

Jonction

Giunzione ABC maschio x2



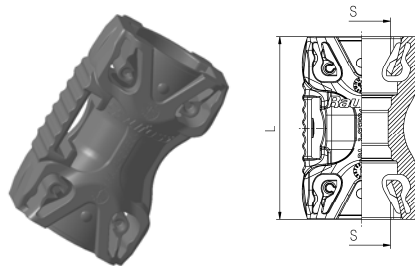
Port Size 1	Port Size 2	Composite	Conventional	Rotolock
Small	Small	893 997 789 4	N/A	899 700 112 4
Regular	Small	893 997 790 4	N/A	899 700 112 4
Regular	Regular	893 997 791 4	N/A	899 700 114 4
Heavy Duty	Regular	893 997 792 4	N/A	899 700 114 4
Heavy Duty	Heavy Duty	893 997 793 4	N/A	899 700 118 4

Union Female

Gerader ABC Verbinder

Union double ABC

Giunzione ABC femmina x2



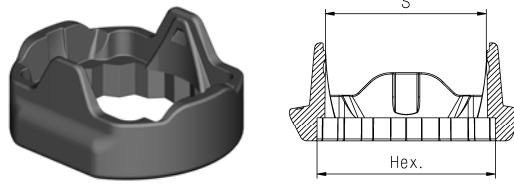
Port Size (2x)	L	Composite	Conventional
Small	39	893 997 787 4	N/A
Regular	45	893 997 788 4	N/A

Rotolock

Rotolock

Rotolock

Rotolock



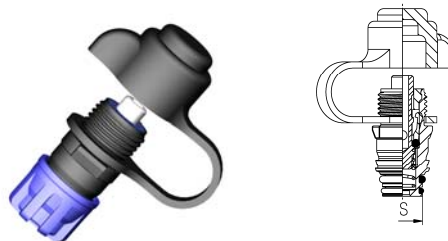
Port Size	Hex.	Color code	Composite	Conventional
Small	16	Dark grey	899 700 111 4	N/A
Small	18	Light grey	899 700 112 4	N/A
Small	22	Light grey	899 700 113 4	N/A
Regular	18	Light grey	899 700 114 4	N/A
Regular	20	Dark grey	899 700 115 4	N/A
Regular	22	Light grey	899 700 116 4	N/A
Regular	28	Dark grey	899 700 117 4	N/A
Heavy Duty	22	Light grey	899 700 118 4	N/A
Heavy Duty	28	Dark grey	899 700 119 4	N/A

Threadless Test point ISO 3583

Prüfanschluß ISO 3583

Prise de pression à clipser ISO 3583

Presse pressione senza filetto ISO 3583



Port Size	Composite	Conventional
Regular	893 880 011 0	463 703 124 0

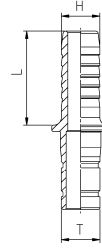
Hose Adapter

Schlauchstutzen Adapter

Adaptateur

Bocchettone per

Only for push in 901 12 0xx (New-Line Push-in Couplings Tube Size 12x1,5)



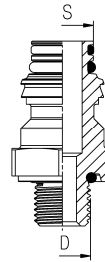
T	H	L	Composite	Conventional
12x1,5	11	30	893 129 467 4	N/A

Swivel

Anschlußstutzen

Embase filetée

Innesto girevole



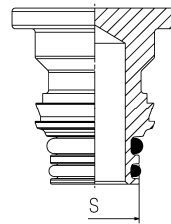
Port Size	D	Composite	Conventional	Rotolock
Small	M10x1,0	893 920 311 2	893 920 342 4	899 700 111 4
Regular	M10x1,0	893 920 312 2	893 920 342 4	899 700 114 4
Small	M12x1,5	893 920 313 2	893 129 191 2	899 700 112 4
Regular	M12x1,5	893 920 314 2	893 129 191 2	899 700 114 4
Small	M14x1,5	893 920 369 2	893 820 887 2	899 700 115 4
Regular	M14x1,5	893 920 315 2	893 820 887 2	899 700 115 4
Small	M16x1,5	893 920 316 2	893 129 192 2	899 700 113 4
Regular	M16x1,5	893 920 317 2	893 129 192 2	899 700 116 4
Regular	M22x1,5	893 920 318 2	893 129 193 2	899 700 117 4
Heavy Duty	M16x1,5	893 920 319 2	893 129 192 2	899 700 118 4
Heavy Duty	M22x1,5	893 920 320 2	893 129 193 2	899 700 119 4

Threadless Swivel Plug

Gewindeloser
ABC Stopfen

Obturbateur ABC
à clipser

Tappo ABC senza filetto



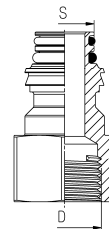
Port Size	Composite	Conventional
Small	893 920 311 4	N/A
Regular	893 920 312 4	N/A
Heavy Duty	893 920 313 4	N/A

ABC Swivel with Internal
Threads

ABC Anschluß mit
Innengewinde

Adaptateur ABC à filetage
femelle

Adattatore ABC con innesto
senza filetto



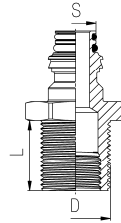
Port Size	D	Composite	Conventional
Regular	M12x1,5	893 920 364 2	N/A
Regular	M14x1,5	893 920 370 2	N/A
Regular	M16x1,5	893 920 365 2	N/A
Regular	M22x1,5	893 920 366 2	N/A

ABC Swivel Bulkhead

ABC Anschlußschott-stutzen

ABC Embase filetée passe-cloison

ABC Innesto girevole con passaparete



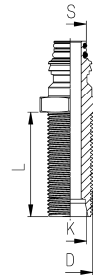
Port Size	D1	D2	Composite	Conventional	Rotolock
Regular	M18x1,5	M12x1,5	893 770 017 2	N/A	899 700 116 4
Regular	M22x1,5	M16x1,5	893 770 145 2	893 129 196 2	899 700 117 4
Heavy Duty	M28x1,5	M22x1,5	893 770 151 2	N/A	N/A

ABC Swivel Bulkhead

ABC Anschlußschott-stutzen

ABC Embase filetée passe-cloison

ABC Innesto girevole con passaparete



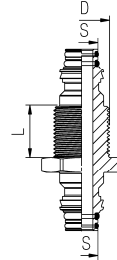
Port Size	D	L	K	Composite	Conventional	Rotolock
Regular	M16x1,5	35	24°	893 770 016 2	N/A	899 700 116 4
Regular	M18x1,5	42	24°	893 770 149 2	893 129 444 2	N/A

ABC Double Swivel Bulkhead

ABC Doppel-anschlußschottstutzen

ABC Embase filetée double/ passe-cloison

ABC Innesto girevole x2 con passaparete



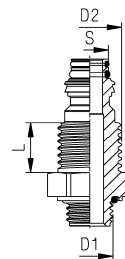
Port Size	D	L	Composite	Conventional	Rotolock
Regular	M22x1,5	20	893 770 146 2	N/A	899 700 117 4
Heavy Duty	M22x1,5	20	893 770 150 2	N/A	899 700 119 4

ABC Swivel Bulkhead

ABC Anschlußschottstutzen

ABC Embase filetée passe-cloison

ABC Innesto girevole con passaparete



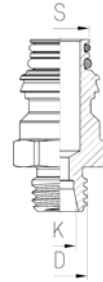
Port Size	D1	D2	L	Composite	Conventional	Rotolock
Regular	M16x1,5	M22x1,5	18	893 770 147 2	N/A	899 700 117 4
Regular	M22x1,5	M22x1,6	18	893 770 148 2	N/A	899 700 117 4

ABC Swivel
with 24° cone connection

ABC Anschluß-stutzen mit
24° Konus

ABC Embase filetee avec
cône 24°

Raccordo girevole ABC con
cono 24°



Port Size	D	Composite	Rotolock
Regular	M12x1,5	893 920 367 2	899 700 114 4

ABC Extended Swivel

ABC Anschlußstutzen,
verlängert




Extension d'embase ABC

Girevole ABC
con prolunga



Port Size	D	L	Composite	Rotolock
Regular	M14x1,5	55	893 920 368 2	899 700 116 4

ABC Port Sizes

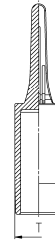
Size	Small	Regular	Heavy Duty
Tube	6x1 / 8x1	6x1 – 12x1,5	12x1,5 / 15x1,5 / 16x2
Cap color	White 	Green 	Blue 

Push-in Plug

Stopfen für
Steckverbindung

Bouchon

Tappo per innesto rapido



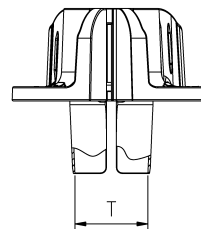
T	Composite	Conventional
6x1,0	899 022 023 4	N/A
8x1,0	893 022 001 4	N/A
12x1,5	893 022 016 4	N/A
15x1,5	893 022 017 4	N/A
16x2,0	893 022 018 4	N/A

Release Tool Standard

Demontage Werkzeug

Outil de déconnexion

Attrezzo smontaggio tubi



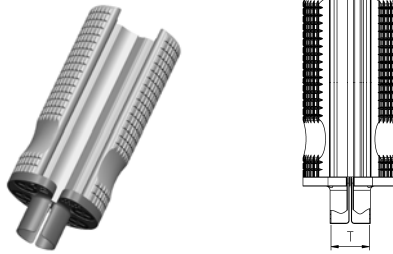
T	Composite	Conventional
6x1,0	899 700 017 4	N/A
8x1,0	899 700 001 4	N/A
10x1,0 10x1,25 10x1,5	899 700 007 4	N/A
12x1,5	899 700 002 4	N/A
15x1,5	899 700 008 4	N/A
16x2,0	899 700 003 4	N/A

Release Tool Professional

Demontage Werkzeug Metall

Outil de deconnexion
metallique

Atrezzo in metallo
smontaggio tubi



T	Composite	Conventional
6x1,0	899 700 011 4	N/A
8x1,0	899 700 012 4	N/A
10x1,0 10x1,25 10x1,5	899 700 013 4	N/A
12x1,5	899 700 014 4	N/A
15x1,5	899 700 015 4	N/A
16x2,0	899 700 016 4	N/A



WABCO (NYSE: WBC) is a leading global supplier of technologies and control systems for the safety and efficiency of commercial vehicles. Founded nearly 150 years ago, WABCO continues to pioneer breakthrough electronic, mechanical and mechatronic technologies for braking, stability and transmission automation systems supplied to the world's leading commercial truck, bus and trailer manufacturers. With sales of \$2.5 billion in 2012, WABCO is headquartered in Brussels, Belgium. For more information, visit www.wabco-auto.com

WABCO